



# COLT CONNECTION

Kelly Mill Elementary Information Express | Established 2012

DECEMBER 02, 2021

## PRINCIPALS CORNER

Dear KME families,

Welcome back! I know that it may seem odd as the opening greeting in December, but we want to say welcome back to our parents, grandparents, and other family members.

It is without question the importance for your child when you are involved in school. Throughout these last couple of years, you have shown your commitment to helping Kelly Mill be the awesome place that it is. Just like it is an odd feeling when students are not in a school building, it is also an odd feeling when parents are not part of the daily make-up of the school.

Thank you, as always, for your ongoing input, support, and other suggestions that push us to do better. Why? The answer is simple. It is because your child is worth it!

So, thank you, and welcome back!

Thank you for the privilege to serve as your principal, and please reach out to me if I can be of any help to you.

Sincerely,  
Ron



## IN THIS ISSUE

- Café Open to Parents
- Whimsy Daisy shop
- Essay Contest Winners
- Creativity Project
- Annual Cookie Swap
- Winter Festival
- Carpool Etiquette

## WHIMSY DAISY SHOP

The annual KME Holiday Gift Shop is open through **Friday, December 3.**

Prices range from \$.25 to \$12, with most items around \$4. We will accept cash or checks, but no change will be given for checks. If parents want to send a check from home, please send it for the amount they want their child to spend, like \$10 or \$20. We are happy to have free gift bags again this year and will have volunteers available to help wrap gifts.

## KME CAFÉ NOW OPEN FOR PARENTS

The café is now open to parents based on the first letter of your last name. For more details and to reserve your spot, please click on the link below. Please reach out to your child's teacher for their specific lunch time.



- **Monday:** Student Last Name **A-E**
- **Tuesday:** Student Last Name **F-J**
- **Wednesday:** Student Last Name **K-O**
- **Thursday:** Student Last Name **P-T**
- **Friday:** Student Last Name **U-Z**

<https://forms.office.com/r/iQs4YrhkBK>

This form will only accept responses up to 9:00 AM daily.

## DATES TO REMEMBER

**Winter Festival**  
TONIGHT!  
Thursday, December 2, 2021

**Winter Break**  
December 22-31, 2021

# HONORING OUR HEROES ESSAY CONTEST WINNERS

Congrats to our KME Grade level winners.



**Emily Pelech**  
Kindergarten  
(Harrell)



**Charlee Kilbane**  
2nd Grade  
(Crowder)



**Anvita Suragihalli**  
3rd Grade  
(Auer)



**Ryan Machovec**  
4th Grade  
(Lopes)



**Ava Ziliak**  
5th Grade  
(Bulau)

## HONORING OUR HEROES ESSAY CONTEST PARTICIPANTS

Thank you to all who participated and shared your Hero Stories

**Olivia Austreng**

5 - Bulau

**Keaya Hensley**

2- Goldsberry

**Addison Meyer**

5 - Gomez

**Sloan Strickland**

2 - Goldsberry

**Tyler Barnaby**

2- Goldsberry

**Piper Jarrett**

5 - Bulau

**Micah Miller**

2- Goldsberry

**Sharini**

**Sundaravaradan**

3 - Harris

**Josie Byler**

3 - Chiodi

**Jaanya Kanungo**

2- Fetting

**Sarah Mobley**

5 - Bulau

**Kate Swinnie**

2 - Goldsberry

**Luke Castle**

4 - Barratini

**Finn Kelley**

2- Goldsberry

**Matthew Muccioli**

5 - Bulau

**Adam Testa**

5 – Bulau

**Palmer Centanni**

5 - Bulau

**Brady Leuenberger**

2- Goldsberry

**Walker Paul**

5 - Bulau

**Amya Torrence**

2 - Goldsberry

**Chloe Corley**

5 - Bulau

**Hannah Lipp**

5 - Bulau

**Ella Peacock**

5 - Bulau

**Nate Worrall**

5 -Bulau

**Madison Demers**

5 - Bulau

**Sadie Lorence**

2- Goldsberry

**Om Rajne**

2- Goldsberry

**Everett Zea**

2 - Goldsberry

**Yusuf Dogan**

2- Goldsberry

**Noah Martin**

2- Hardin

**Abbie Rhody**

Goldsberry

**Phoenix Leckey**

4 - Brown

**Charlotte Garcia**

5 - Bulau

**Ellie Beth McFarland**

2- Goldsberry

**Preston Robertson**

2- Goldsberry

**Daniel Gomez**

2 - Hardin

**Hadley Shepard**

5 - Bulau



KELLY MILL ELEMENTARY PRESENTS

# The Creativity Project

THE GREATEST GIFT



December's theme is *The Greatest Gift*.

Display your creativity through artwork, music, poetry, writing, or video (60 sec. or less) showing *The Greatest Gift*.

Work entered by Dec. 17th will be digitally showcased on our webpage.

Check out November entries on our webpage.

Scan for Entry Form



Submission Steps:

1. Sign in to *Classlink*
2. Open the *Microsoft 365* app (verify you are signed in as a student)
3. Scan the QR code to submit your entry

\*One entry per student please.

#InspireWestForsyth

## LOOKING FOR A FEW GOOD BAKERS

It is time for the Kelly Mill Elementary 2021 annual cookie and treat swap!!

Every December at Kelly Mill Elementary, our parents/caregivers provide homemade cookies, candies, and treats for the entire staff to enjoy and share. This tradition is an absolute favorite among everyone! It is such a fun way to thank the teachers and staff at Kelly Mill Elementary for all their hard work and dedication to our children. We need your help though to make this event a success. So, pull out your recipes and pick your favorites. It's time to get baking! We ask that only homemade items be sent in please.



The swap will be held on **Friday, December 10th from 8:30am to 12:30pm.**

### HOW YOU CAN HELP:



1. Bring in empty cookie/baking tins **before December 10th** and leave them in the front office.
2. **On December 10th, bring in a dozen or more cookies, candies, and/or baked treats.** Due to the volume of items being sent in, we will not be able to return personal items, so please bring or send in your treats in a disposable container. Also, please send your recipe in as well so that the staff can make copies for themselves and/or check for any ingredients they may be allergic to.
3. **Volunteer to collect the treats and setup on Friday, December 10th from 7 a.m. - 8:30 a.m.** We will be collecting from the carpool line and bus line.

**Date:** Friday, December 10, 2021

**Time:** 8:30am- 12:30pm EST

**Location:** KME Multi-purpose Room

**A SignUpGenius is available for donations of cookies and cookie tins. And there are also volunteer opportunities such as Carpool helpers and Bus line helpers. Click the link to sign up:**

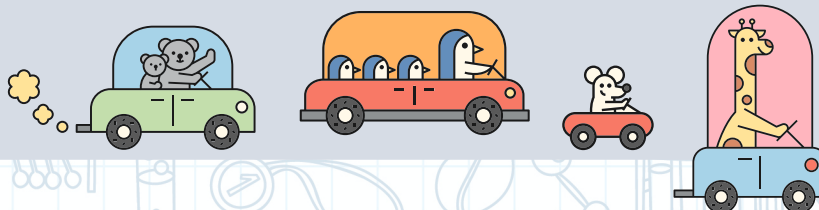
**[www.signupgenius.com/go/20f0e4cada922a13-looking1](http://www.signupgenius.com/go/20f0e4cada922a13-looking1)**

## CARPOOL ETIQUETTE AT KME

We have experienced an increasing number of parents and students getting out of their cars at various points in the morning car rider line and crossing through traffic. There is typically an increase toward the end of the time frame, which suggests parents are concerned about being tardy. This growing number of people on foot creates an unsafe environment and even longer delays in the car line.

We would like to remind our Colts to stay in their cars until they arrive at the front of the school to exit their vehicles. For safety reasons, we ask that you refrain from parking and walking your student up to school whenever possible (ex: carrying large items). We thank you for your prompt attention to this matter.

– Your Kelly Mill Administration Team



# **Our 5th Annual Heart of Forsyth Winter Festival**

Cumming, Kelly Mill, Mashburn, Whitlow, Hendricks, Lakeside, Otwell, Vickery Creek, Forsyth Central

**Thursday, December 2, 2021**

**6:00-8:00 pm**

**Forsyth Central High School**

We invite our Central Cluster Families to join us for this winter wonderland event!

- **Decorated tree walks**
- **Pictures with Santa**
- **Hot Chocolate**
- **Live musical performances**
- **Activity tables**
- **Much more**



Admission: Please bring new, unwrapped toys, teen items, used or new bikes, or other gifts designed for children ages 0-18 to benefit The Place of Forsyth's Holiday House



**COLT  
CONNECTION**

KELLY MILL ELEMENTARY SCHOOL  
1180 Chamblee Gap Road, Cumming, GA 30040